

DONATION *Matters*

Issue 4, 2006

*A Newsletter about the Corporate
Donation Program of the Wisconsin
Technical College System Foundation*

*Nicolet Area Technical College
Works With Manufacturers to
Provide Training*



*Northcentral Technical College
and UW-Marathon County
Provide Joint Education*



*Chippewa Valley Technical
College Thinks Big at New
NanoRite Center*

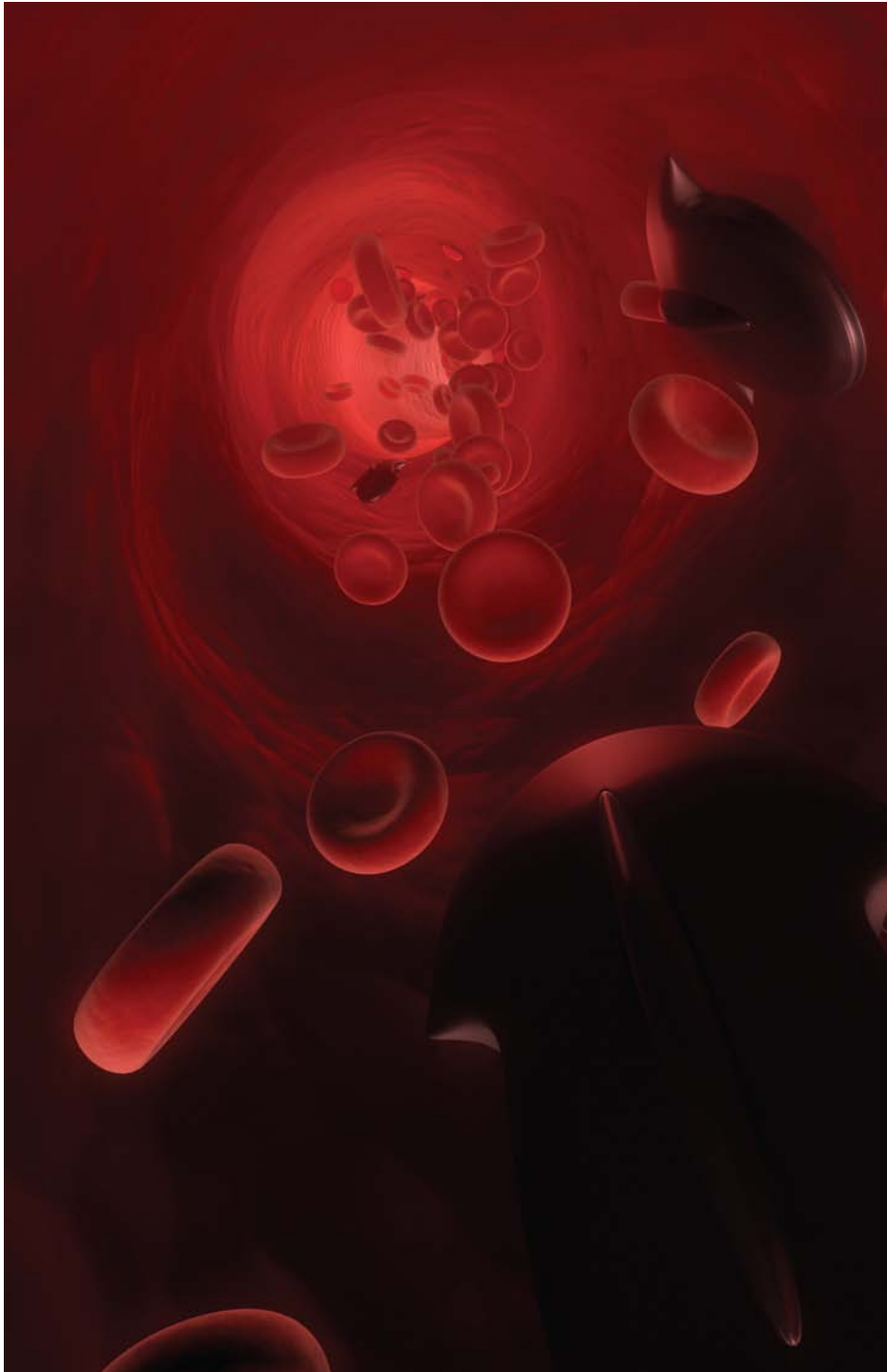


*Wisconsin Indianhead Technical
College's Conference Center is
a Mecca for Area Tourism*

*Help educate Wisconsin's
workforce...donate equipment
to the Technical Colleges*

Corporate Donation Program

Wisconsin Technical College System Foundation



IN THIS ISSUE

- 3 *At Nicolet Area Technical College*
Nicolet and Northwoods Manufacturers Work Together to Create Critical Core Manufacturing Skills Training Program
- 6 *At Northcentral Technical College*
Joint Effort Expands Educational Opportunities for Local Students
- 8 *At Chippewa Valley Technical College*
Thinking Big About Thinking Small in the Chippewa Valley
- 12 *At Wisconsin Indianhead Technical College*
Conference Center Donation Boosts Tourism Business Epicenter Development

On our cover:

The new CVTC nanotechnology and microfabrication NanoRite center trains students to make things that are very small. One big use of nanotechnology is in fabricating medical devices, shown on the front cover.

At Nicolet Area Technical College

Nicolet and Northwoods Manufacturers Work Together to Create Critical Core Manufacturing Skills Training Program



*The Wisconsin Technical College System, established in 1911, includes 16 regional post-secondary education districts with 49 campuses statewide serving over 453,000 students annually. Corporations contract with the Colleges to train over 100,000 members of the corporate workforce each year. This issue of **Donation Matters** highlights the districts shown in pink on map. Future issues will visit with our other technical college districts.*



Top: Creating a positive working environment is an important aspect of enhancing productivity. Here, American Plastics Production/Facilities Manager Cheryl Kamba, right, talks with a worker at the Rhinelander facility. The company will send 18 employees to Critical Core Manufacturing Skills courses taught by Nicolet College staff.



Bottom: Nicolet College Customized Training Coordinator Sandy Bishop leads a leadership training course for members of the Northwoods Manufacturing Training Consortium.

Nearly 30 years in the plastics manufacturing business has taught Cheryl Kamba more than a thing or two about the technology and processes it takes to turn out successful products.

She and other veteran staff at **AMERICAN PLASTICS** in Rhinelander also know how to teach new employees the ins and outs of producing acres of specialized food packaging film on a daily basis.

“What we don’t have in-house is the ability to teach the soft skills, the people and leadership skills,” said Kamba, production/facilities manager at **AMERICAN PLASTICS**. “To be successful, you need both the technical capabilities and also the ability to get people to work as a team, to solve problems on their own, to think on their feet and adapt to change.”

...continued on page 4



Continued from page 3...

Manufacturing skills training program at NATC



—Dr. Adrian Lorbetske
*President
Nicolet Area
Technical College*



At American Plastics, molten plastic is injected into this forced air tubular blower system where the plastic cools and sets into sheets before it is formed into packaging for food products.

To round out the skills sets of her technically-proficient front line supervisors and floor workers, Kamba joined forces with Nicolet College and the Northwoods Manufacturing Training Consortium to implement the Critical Core Manufacturing Skills program.

AMERICAN PLASTICS and seven other Northwoods manufacturers are participating, said Sandy Bishop, Nicolet College's point person developing the training program.



American Plastics, above, is investing in its workers by sending 18 of them to Critical Core Manufacturing Skills courses taught at Nicolet.

“All of the manufacturers stressed a need for this type of training,” said Bishop, customized training coordinator at Nicolet. “Everything is geared toward teaching supervisors how to be better leaders and production workers how to work as a team, be more personally accountable, and how to adapt to change.”

A large portion of the training is funded by a \$41,505 incumbent worker training grant Nicolet received from the Wisconsin Technical College System. The training started in late fall 2006 and will continue until next September. In the end, more than 150 workers from the eight manufacturers will have participated in one or more of the eight classes in the program.

...continued on page 14

The Northwoods Manufacturing Training Consortium

Eight Northwoods manufacturers recently joined forces with Nicolet College to form the Northwoods Manufacturing Training Consortium. By combining efforts, the manufacturers were able to partner with Nicolet to bring an increased level of job training to the Northwoods.

Manufacturers in the consortium include:

- **PACKAGING CORPORATION OF AMERICA** – makes container corrugated cardboard.
- **DAIGLE BROS.** – constructs structural steel components for industrial and commercial facilities.
- **OLDENBURG GROUP** – a heavy-duty metal manufacturing and engineering company that makes products for mining and forestry industries and the military.
- **ONEIDA TOOL & MACHINE** – specializes in CNC turning, milling, drilling, general machining and prototype production for general industry and the ATV accessory market.
- **AMERICAN PLASTICS** – produces high-barrier plastic film and pouches primarily for food packaging.
- **HARLEY-DAVIDSON MOTOR Co.– TOMAHAWK FACILITY** – produces fiberglass and plastic motorcycle parts that include sidecars, saddlebags, windshields and many other components.
- **NORTHLAND STAINLESS** – fabricates stainless steel pressure vessels to the pharmaceutical, chemical, biotechnology and ethanol industries.
- **ADVANCED BARRIER EXTRUSION** – a start-up company that produces multi-layer plastic films for cast film markets. 🍷

At Northcentral Technical College

Joint Effort Expands Educational



—Dr. Lori Weyers
President
Northcentral
Technical College



Above, Dr. Lori Weyers, President, Northcentral Technical College, discusses the highlight of the new collaborative agreement – providing greater access to higher education for all. Right, Dr. Lori Weyers and Jim Veninga, Campus Executive Officer and Dean, University of Wisconsin-Marathon County, celebrate the signing of a partnership agreement between the two schools to offer a general studies degree in liberal arts.

Northcentral Technical College (NTC) and the University of Wisconsin-Marathon County (UWMC) recently signed an agreement that will expand educational opportunities in north central Wisconsin beginning in January 2007 by providing students with a general studies degree in liberal arts.

The new collaborative agreement, titled “General Studies Initiative: A Liberal Arts Partnership,” is a joint effort between NTC and UWMC to serve students at NTC’s regional campus locations in Antigo, Medford, Phillips, Spencer and Wittenberg. Under this collaboration, NTC will award a General Studies Certificate and UWMC will award the UW Colleges Associate of Arts and Science (AAS) degree.

According to Lori Weyers, President, NTC, the highlight of the collaborative

agreement is that it provides greater access to education for all.

“We’re offering courses in a flexible manner to give people the opportunity to pursue an education that fits their busy lifestyle,” said Weyers. “Courses will be offered online, during the evening and on weekends in addition to the traditional in-person classes during the week.”

All of the courses, including the 30 credits earned through UWMC, will be offered at NTC regional campus locations either live, through interactive television or online.

With the new initiative, students in the outlying areas will have the opportunity to begin their baccalaureate degree without ever having to leave home. The UW Colleges Associate of Arts and Science degree fulfills the minimum general

Opportunities for Local Students

education requirements needed to transfer to a UW four-year college.

“At NTC, we realize that where people start their careers is not necessarily where they end their careers,” said Weyers. “Taking the learning out to our regional sites gives our students options as they pursue higher education.”

Jim Veninga, Campus Executive Officer and Dean at UW-Marathon County, notes that, “Wisconsin needs more baccalaureate-educated individuals as the economy grows and changes, and this important initiative will contribute to the achievement of that goal.”

The General Studies Initiative is not the first collaboration between NTC and UWMC. The educational partners currently work with the University of Wisconsin-Oshkosh to offer a baccalaureate degree in nursing in Wausau.

“We’re delighted to be working with UWMC to expand educational opportunities in north central Wisconsin,” said Weyers. “Collaboration is vital to local economic development and ensures that we provide our district residents with high quality educational programs and services into the future.”

University of Wisconsin-Marathon County

The University of Wisconsin-Marathon County’s mission is to provide access to a liberal arts education and to give students the best start in preparation for bachelor and advanced degrees. UWMC’s roots began in the 1930s as an extension of UW-Madison, when visiting professors traveled to Wausau to teach classes. In 1947 the University Center in Wausau was created, and in 1960 Marathon County, which owns the buildings, constructed the main part of the current building, with additions and other buildings being added over the years. Enrollment has grown from 162 in 1947 to a current record high of 1,320. UWMC currently awards an Associate of Arts & Science degree, and through agreements with other campuses, holds classes leading to Bachelor’s degrees in Business Administration, General Studies and Nursing, and graduate classes in Community Mental Health.



“Collaboration is vital to local economic development and ensures that we provide our district residents with high quality educational programs and services into the future.”

– Lori Weyers, President, NTC

Northcentral Technical College

For more than 90 years, Northcentral Technical College (NTC) has provided relevant occupational training to people from all over north central Wisconsin and beyond. Begun in 1912 in a small two-story building and called the Wausau Industrial School, the College grew rapidly in response to evolving technology that triggered the need for expanded services. Today, the NTC district covers all or portions of 10 counties including Marathon, Lincoln, Taylor, Price, Langlade, Menominee, Clark, Portage, Shawano and Waupaca. NTC has six convenient locations

including the Wausau central campus, as well as regional facilities in Antigo, Medford, Phillips, Spencer and Wittenberg.

The College serves more than 17,000 people annually and offers its learners 30 Associate Degrees, 21 Technical Diplomas and 64 short-term flexible certificate options, as well as continuing education and workplace learning services.

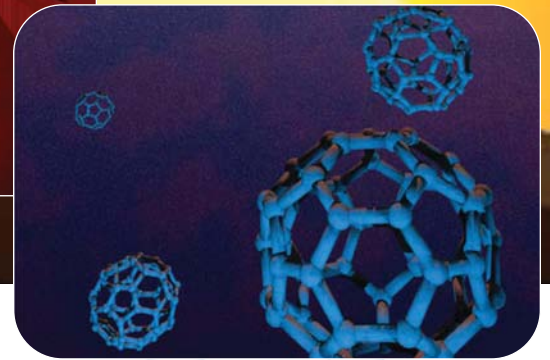
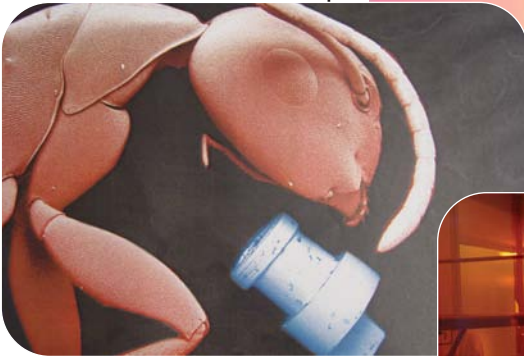
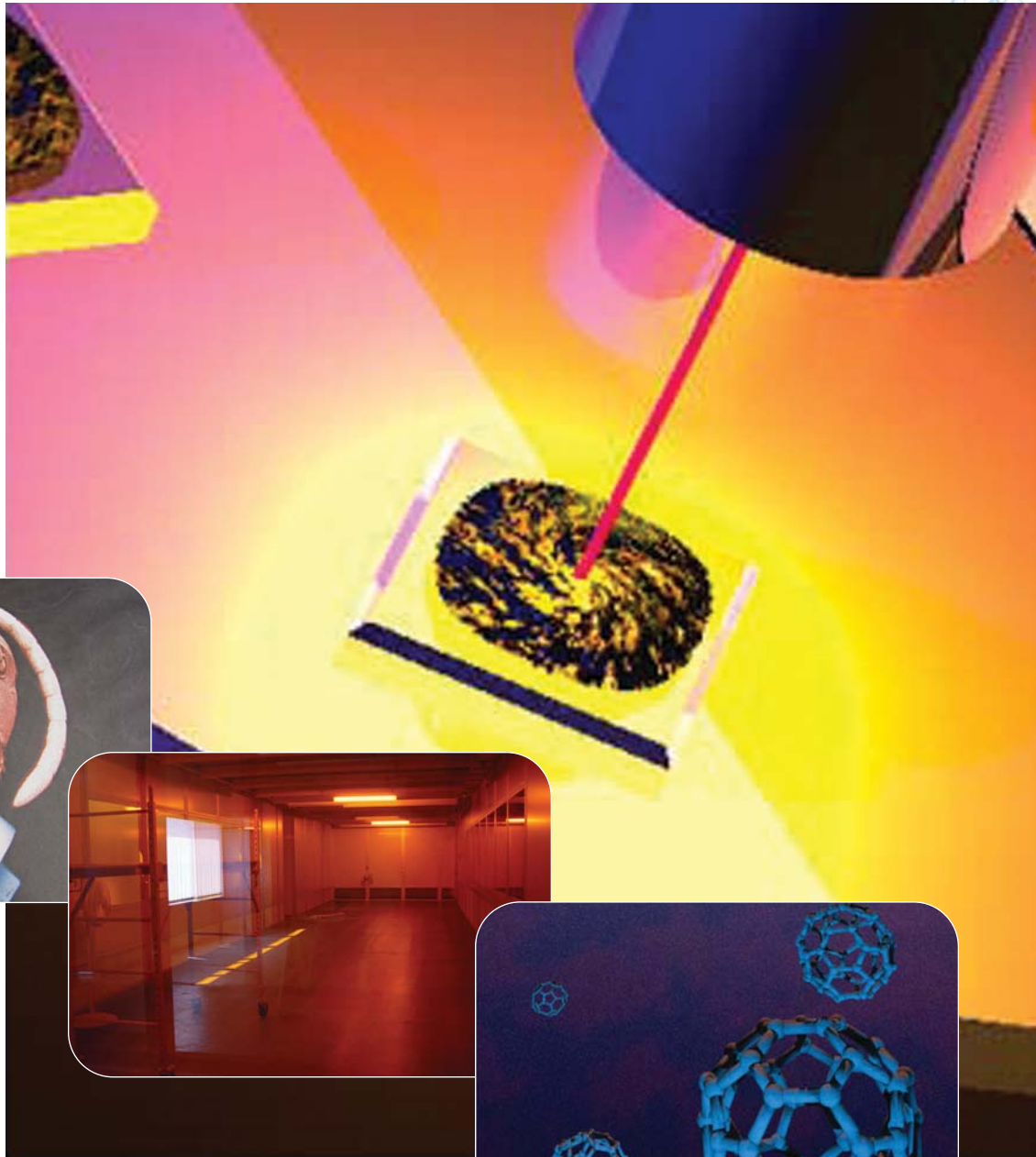
For more information on NTC, please call 715.675.3331 or visit us on the web at ntc.edu.

At Chippewa Valley Technical College

Thinking Big About Thinking Small



—Dr. William Ihlenfeldt
President
Chippewa Valley
Technical College



Mark Tyler, CEO of **OEM FABRICATORS** of Woodville, Wisconsin put it this way: “We have learned that thinking small may be even bigger than thinking big.”

That’s what Tyler told a reporter for the Milwaukee Journal Sentinel. The same day Governor Jim Doyle told a NanoRite groundbreaking crowd at the Gateway campus of Chippewa Valley Technical

College that **OEM** would be the first tenant in the nanotechnology and microfabrication center.

Tyler is making a business calculation. He knows that his firm, if it’s to maintain favorable margins, has to compete with ever more sophisticated technology. There are many manufacturers worldwide that can knock out machine or other parts with

in the Chippewa Valley



Large: computer animation of a laser beam striking carbon causing molecules to self assemble into nanotubes and buckyballs.

Above: student training in molecular microscopy

Small right to left: Showing size comparison of an ant and a microfabricated part;

The Class 100 cleanroom where the fabricating is carried out uses fine air filters to prevent contamination by the atmospheric dust.

Buckyball or a C60 carbon molecule named after Buckminster Fuller, the architect who pioneered the geodesic dome. Synthesized carbon buckyballs are known for strength and lightness.

a workforce paid at some fraction of his. OEM's prosperity is tied to machining parts so precise that most competition is eliminated. The Woodville firm is in St. Croix county, notably one of the 12 counties of the Minneapolis-St. Paul metro area. That metro area is an international center of the medical device industry.

Medical device firms are poised for growth as baby boomers get old and sick in an era of astounding medical discovery.

That's why Mark Tyler has given Chippewa Valley Technical College \$100,000 and agreed to become the first tenant of NanoRite when it opens in August 2007. Tyler believes that soon he

...continued on page 10

Continued from page 9...

Thinking Big About Thinking Small at CVTC



CVTC students training in the new NanoRite center.

will not be the only manufacturer thinking small. “Once people realize the NanoRite Center is here, there will be a line out the door of companies wanting to participate,” he said.

NanoRite is a 37,000 square foot incubator with three labs of more than 4,000 square feet, and other smaller labs soon to be occupied. NanoRite incorporates both nanotechnology and microfabrication, two technologies differing primarily in scale.

Nano is a wondrous and increasingly applied technology that, simply put, will change the world: creating a range of new products from ultrastrong, lightweight materials to self-assembling machines at the molecular scale. It will disrupt a lot while creating yet-to-be-imagined advances.

Microfabrication is the technology that is already making, for example, chemically-treated stents for diseased arteries. Still in development, and the



CVTC Nanoscience instructor Hans Mikelson

amount of development is boggling, are devices like microturbines run on jet fuel that would – for example – replace batteries in a laptop! Precision is key to understanding microfabrication. You can make turbines the size of a thumbnail if you can machine the respective parts with breakthrough accuracy. It’s this precision at a small scale that will spawn new market-creating devices.

“Some companies will probably start at the microfabrication level. But it’s a matter of scale and time before they perhaps move down to the nano level,” said Bill Ihlenfeldt, Chippewa Valley Technical College president and the chief

fundraiser behind the construction of NanoRite.

The first graduating class of the Nanoscience Technology associate degree at CVTC, completed its critical fourth semester last summer at the campus of the University of Minnesota. Laboratories with high end microscopy have since been built at CVTC and key local partners brought in to the endeavor. The University of Wisconsin at Eau Claire, with its Materials Characterization Center, and UW-Stout with its focus on biotechnology, add research components that will greatly strengthen the Chippewa Valley nano and microfab initiative, Ihlenfeldt says. Chancellors Sorensen and Levin-Stankevich and President Ihlenfeldt held a news conference last fall that both demonstrated a new class 100 clean room and accompanying microfab lab, and formally set in motion a grant for the three institutions to co-write curriculum for the Nanoscience Technology program.

The project was hailed by the Chippewa Herald, Eau Claire Leader-Telegram and Milwaukee Journal Sentinel, the latter calling it the “kind of public-private partnership that Wisconsin entrepreneurs need now, more than ever, to get a leg up globally.” 🍷

Chippewa Valley Technical College

Chippewa Valley Technical College has been named one of the fastest growing colleges of its kind in the U.S., according to the U.S. Department of Education. In the space of a decade, CVTC has grown from a college of less than 3,000 students or the equivalent, to a college of nearly 5,000.

Partnerships include:

- A Hass Technical Center for machine tool, tool and die and electrodischarge machining
- A Health Education Center including partnerships with the University of Wisconsin and Marquette University
- NanoRite, a center for innovation in nanotechnology and microfabrication, now inviting inquiries from prospective tenants

CVTC serves part or all of 11 counties in west-central. Its mission is deliver progressive technical education, meet and anticipate the needs of employers and students, and strengthen communities. 🍷

“ This is the kind of public-private partnership that Wisconsin entrepreneurs need now, more than ever, to get a leg up globally.”

– Milwaukee Journal Sentinel

OEM Fabricators Inc.

OEM FABRICATORS has served the needs of original equipment manufacturers since 1986. From the beginning, **OEM** has positioned itself as a niche player in medium to heavy gauge capabilities, offering fabrication, welding, machining, shot blast, painting and assembly.

Their comprehensive and diversified approach to solving material requirements has earned them a solid reputation with a wide range of customers over the years. By delivering a quality product on time to over 80 customers involved in a dozen different industries, **OEM** is diversified to weather economic storms.

Located in Woodville in St. Croix, the fastest growth county in Wisconsin, **OEM FABRICATORS** will soon add another plant in Neillsville, thus approximating the easternmost and westernmost points in the Chippewa Valley Technical College district. 🍷

At Wisconsin Indianhead Technical College

Conference Center Donation Boosts Tourism



—Mr. Charles Levine
*Interim President
Wisconsin Indianhead
Technical College*



Mary Stenberg, left, WITC Ashland Interim Campus Administrator presents Tourism Development Specialist Ruth Goetz, right, with a plaque thanking her for the conference center donation.

This summer, Wisconsin Indianhead Technical College (WITC) completed a refurbishing project of the Ashland campus conference center lounge after receiving a \$10,000 donation: \$5,000 was from the Wisconsin Department of Tourism and \$5,000 from the department's Tourism Development Specialist Ruth Goetz.

And WITC College Advancement Associate Deb Ellefson said Goetz, whose office is located on site at the

college's northern-most campus, was the one who "really got the ball rolling" on the donation to the college.

"Because of her interests and networking, WITC has established relationships with community members in Ashland, Bayfield, the Apostle Islands, etc.," Ellefson said. "She worked with the Chambers of Commerce throughout Northern Wisconsin. With tourism being one of the larger employers in our area, we (WITC) were right in the middle

Business Epicenter Development

of some of the tourism projects and definitely a meeting place for the tourism groups from all over Northern Wisconsin.”

“For many, this lounge is their first and only impression of the campus,” said Mary Stenberg, WITC Ashland Interim Campus Administrator. “What a perfect way for Ruth to leave behind a legacy with WITC.”

This isn’t the first time that donations for the facility have had a direct link to tourism business development, according to WITC Interim President Chuck Levine. Nearly half—or \$330,000—of the conference center’s 1981 construction cost was originally funded by tourism funds from U.S. Department of Economic Development Administration and the Upper Great Lakes Regional Commission, and the college president said this new donation was used for updates that have made the atmosphere even more attractive and appealing to outside groups looking for meeting space. The Conference Center is currently Lake Superior’s South Shore mecca for business and community meetings, with over 88,000 participants and 2,700 conferences booked last year.

WITC Foundation Executive Director Carol Heim has watched the conference centers develop over the years thanks to generous donations from private donors and businesses. She said the number of people served each year through conference centers is “quite impressive,” and that the amount raised for each conference center over several years has increased through the years as people realize the benefits of locating their meetings on a technical college campus.

“The connection between economic health and our college’s mission continues to be recognized by the community,” Heim said, “and donations

are a great indicator of that level of understanding between the technical college and the communities served. It underlines the responsibility we have for a healthy economic climate and business success.”

Each of WITC’s four campus conference centers, located in Ashland, New Richmond, Rice Lake, and Superior, have similar histories of donations from the business and industry community. Three of the four conference centers were originally built through business and community contributions and now serve their ongoing needs for meeting space. 📌

Wisconsin Indianhead Technical College

Wisconsin Indianhead Technical College is an accredited college offering a technologically-advanced college experience based on the latest theories and approaches. Faculty mentors with real world experience offer career and technical programs, professional certification, and business and industry services that contribute to the vitality of Northwest Wisconsin. The college’s four main campuses located in Ashland, New Richmond, Rice Lake, and Superior and the Ladysmith and Hayward branch campuses are community epicenters that promote business growth, supply a skilled workforce, and provide local education and training that supports a strong economy. The campus conference centers are also high-tech hubs that make it possible for local corporate and community development organizations to participate in statewide, national, or global meetings using the latest teleconferencing technology. 📌



*WITC
campuses
provide
conference
and meeting
places for one
of the largest
employers in
the Northern
Wisconsin area:
tourism.*

Continued from page 5...

Manufacturing skills training program at NATC

We thank these recent donors:

American Bolt
American Family Insurance
Briggs & Stratton
Climatic Control
DaimlerChrysler
Evco
GE Medical Systems
GE Osmonics
Generac Power Systems
Gordon Flesch Company
Harnischfeger Corporation
In-Sink-Erator
Johnson Financial Group
M R Bearing
Midland Plastics
Monarch Corporation
Polacheck Management
PT Products, Inc.
Schroeder Installation Systems
Sony Pictures Digital Networks
State Machine Tool
Thermo Electron
UW Credit Union
Waukesha Industrial Supply, Inc.
Wells Fargo Bank
Wisconsin Control Corporation
Zero Zone

***To donate call
1-800-322-1354***



American Plastics Cheryl Kamba, top left, chats with production workers at the Rhinelander facility. The plant specializes in producing high-barrier plastic film for food packaging. The high-tech plastic extends the shelf life of food by preventing primarily oxygen and moisture from penetrating the packaging.

AMERICAN PLASTICS, which runs 24 hours a day, seven days a week, is participating to gain every competitive advantage it can, explained Kamba, who manages the plant's production and maintenance employees. "The food packaging industry is just exploding," she said. "We have many, many more

competitors than what we did just five years ago. We want to instill in every employee what it takes for **AMERICAN PLASTICS** to be successful, and that when the company is successful, they personally will be successful, that there is a direct benefit to them as well." 🍷

Nicolet Area Technical College

The number of students enrolling at Nicolet Area Technical College increased 8.4 percent in the fall of 2006, with nearly 1,400 students taking credit classes at Nicolet.

Along with offering many opportunities for academic achievement, the college, with campuses in Rhinelander and Minocqua, also offers numerous business development and personal enrichment opportunities through its Center for Business and Community Education; the Nicolet Live! Arts and Speakers Series, which annually features about 20 theatre and lecture events; the Outdoor Adventure Series; Continuing Education; and the Institute for Learning in Retirement, made up of nearly 300 Northwoods retirees with a life-long desire to learn. 🍷



**To find out more about
The Corporate Donation Program,
call 800-322-1354, or email
corporate@wtcsf.tec.wi.us.**

**You can also check out our web site
at www.donatetoeducation.com.**

WISCONSIN TECHNICAL COLLEGE SYSTEM

WTCS System
Daniel Clancy, President

Blackhawk
Dr. Eric A. Larson, President

Chippewa Valley
Dr. William Ihlenfeldt, President

Fox Valley
Dr. David L. Buettner, President

Gateway
Mr. Bryan Albrecht, President

Lakeshore
Dr. Michael Lanser, President

Madison Area
Dr. Bettsey Barhorst, President

Mid-State
Dr. John Clark, President

Milwaukee Area
Dr. Darnell E. Cole, President

Moraine Park
Dr. L. Gayle Hytrek, President

Nicolet Area
Dr. Adrian Lorbetzke, President

Northcentral
Dr. Lori Weyers, President

Northeast Wisconsin
Dr. H. Jeffrey Rafn, President

Southwest Wisconsin
Dr. Karen R. Knox, President

Waukesha County
Dr. Barbara Prindville, President

Western
Dr. Lee Rasch, President

Wisconsin Indianhead
*Mr. Charles Levine,
Interim President*

Foundation Board Members

Edward Chin, President
Past President & State Director of
Wisconsin Technical College System
Past Board Member, Competitive Wisconsin
Past Board Member, Forward Wisconsin
Past Research Specialist,
University of Wisconsin - Madison

**Eugene Lehrmann,
Vice-President**
Past President of Wisconsin Technical College
System Foundation
Immediate Past President (National),
American Association of Retired Persons
Chairperson, Wisconsin Board on Aging and
Long Term Care
Past State Director, Wisconsin Technical College System
Past Member, National Hospice Organization Board

James Elliott, Secretary
Past President, Wisconsin Technical
College System Board
Member of Greater Milwaukee Committee
Past President, Milwaukee Building Trades Council
Past Member of Competitive Wisconsin

Robert Sorensen, Treasurer
Past State Director of Wisconsin Technical
College System
Past President of Moraine Technical College
Past Member of Forward Wisconsin
Past Member of Competitive Wisconsin

Robert Aagaard, Board Member
Attorney at Law
Member of Wisconsin Bar
Member of University of Wisconsin Athletic Boosters

**C. Phillip Johnson,
Board Member**
Past Member of Wisconsin Bar
Past President of Wisconsin Technical
College System Board
Past Board Member, U.W. Board of Regents
Past President, Wisconsin Technical College
System Foundation, Inc.

Linda Stewart, Board Member
Director of Workforce Development Center,
U.W. Milwaukee
Past Cabinet Secretary, State of Wisconsin
Department of Workforce Development
Past Deputy State Director of Wisconsin Technical
College System Board
Past Assistant Vice President of Corporate Banking,
First Bank

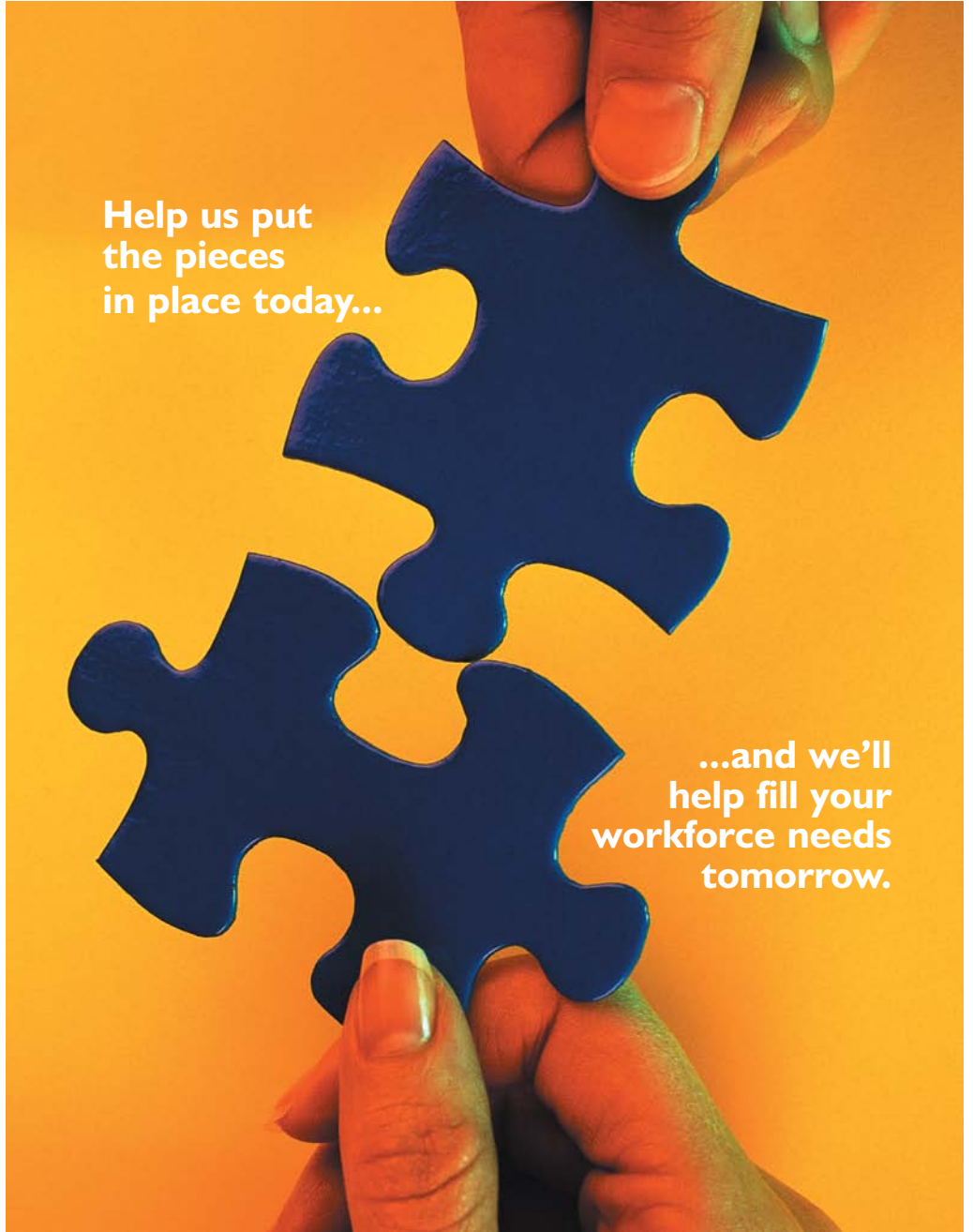
Wisconsin Technical College
System Foundation, Inc.
One Foundation Circle
Waunakee, WI 53597

www.donatetoeducation.com
email: corporate@wtcsf.tec.wi.us

Call 1-800-322-1354 or 608-849-2444

*Donation Matters is published quarterly by the
Wisconsin Technical College System Foundation.
It is sent to 2,000 Wisconsin decision-makers in
the manufacturing, service, and distribution sectors
statewide, as well as to the Technical
College System itself.*





Help us put
the pieces
in place today...

...and we'll
help fill your
workforce needs
tomorrow.

To get your company involved in the Corporate Donation Program
call 1-800-322-1354 or 608-849-2444

Corporate Donation Program

Wisconsin Technical College System Foundation

One Foundation Circle, Waunakee, WI 53597

Visit our web site at www.donatetoeducation.com or email us at corporate@wtsf.tec.wi.us.

Wisconsin Technical College
System Foundation
One Foundation Circle
Waunakee, WI 53597

NON PROFIT ORG.
U.S. POSTAGE PAID
LA CROSSE, WI
PERMIT #25